

**Missouri Lodge of Research (MLR)
Breakfast/Meeting in Jefferson City
May 19, 2007**

**Your Gifts to MLR are now
Deductible!**

SEMI-ANNUAL MLR MEETING

This year's Semi-Annual Meeting of the Missouri Lodge of Research will be held at the "Capitol Plaza Hotel", Jefferson City, during the Annual Session of the Grand York Rite of Missouri. This Session will be from May 16th through the 20th beginning with the 12th Annual Charity Golf Tournament to be held on Wednesday the 16th at 12 o'clock Noon.

The Lodge of Research Breakfast and Meeting will be held at 7:00AM this year on Saturday, May 19th in a room to be designated. Right Worshipful Brother Nick Cichielo, Grand Chaplain of the Grand Lodge of Missouri and program coordinator for the MOCHIP presentations, will be our Honored Guest Speaker at the Breakfast. Tickets will be available in the hotel registration area prior to the breakfast from our Lodge of Research Secretary, RWB Ron Miller. Cost is \$12.00.

The MLR is currently accepting ideas, in the form of either freehand or computer generated drawing, for a NEW MLR LOGO to be used as the identifying mark of the Lodge of Research. The new logo may be presented in banner, crest or freehand design, but MUST be reproducible for use in ALL the newsletters and annual publications.

Any and all submissions will become property of the Missouri Lodge of Research and will not be returned. There will be no compensation for the selected design, other than an open and public "thank you" and knowing that it will become an immediately recognizable sign for the MLR.

Please make submissions to: Adriene Green by mail to Grand Lodge Office (6033 Masonic Dr, Suite B, Columbia MO 65202-6535 or by Email to: **aprice@momason.org**. Entries will be review by MLR Officers before further action is taken.

We do not stop laughing because we grow old. We grow old because we stop laughing. Live well...laugh often...love all...trust few...harm none.

Sign Outside a secondhand shop:
WE EXCHANGE ANYTHING BICYCLES, WASHING
MACHINES, ETC. WHY NOT BRING YOUR WIFE
ALONG AND GET A WONDERFUL BARGAIN?

On December 12, 2006, the Missouri Lodge of Research received a letter from Van Matre, Harrison, and Volkert, P.C., indicating that the Lodge of Research had been granted 501c(3) tax exempt status, thus culminating a more-than-two year process of investigation and application.

On September 27, 2004, at the Annual Meeting of the Lodge of Research, a motion was made by M.L.R. Editor Ronald E. Wood, Jr., and seconded by Jon Broyles, that the Secretary investigate the possibility of the Missouri Lodge of Research becoming a 501c(3) tax exempt organization. The motion passed, and work was immediately begun investigating the process and requirements of such an undertaking.

The following spring, at the mid-year meeting of the Lodge of Research, Secretary Ronald D. Miller reported on the initial findings regarding the application process, and asked for guidance in pursuing the issue of gaining tax-exempt status as a 501c(3). At that point the application began in earnest, and following many hours of meetings and application reviews, the application was accepted by the Internal Revenue Service.

The fact that the Missouri Lodge of Research is now a 501c(3) "tax exempt" organization is meaningful to members in a most-important way. You now have the ability to deduct any contributions made as a gift to the Lodge of Research from your taxes. In this manner, both the donor and the Lodge of Research can benefit greatly.

According to laws governing the 501c(3) process, donors will receive written substantiation for any contribution of \$250.00 or more. The Lodge of Research plans to acknowledge all gifts, regardless of size.

Secretary Ron Miller states that "as a 501c(3) not for profit organization, we now have the ability to look toward the future, and guarantee the solvency of our Lodge of Research. It is our hope that through donor gifts we will be able to build a firm foundation for the Lodge of Research. While membership dues currently cover the expense of publishing our Annual Research Volume, we now have a plan in place that will allow the program room to expand and improve. In this way we can better meet the needs and desires of the Brethren we are privileged to call Lodge of Research members."

Any member desiring more information regarding the 501c(3) charitable deduction program of the Lodge of Research may contact our Missouri Lodge of Research Assistant, Adriene Green at: **aprice@momason.org**.

=====
**Those who jump off a Paris bridge
are in Seine.**

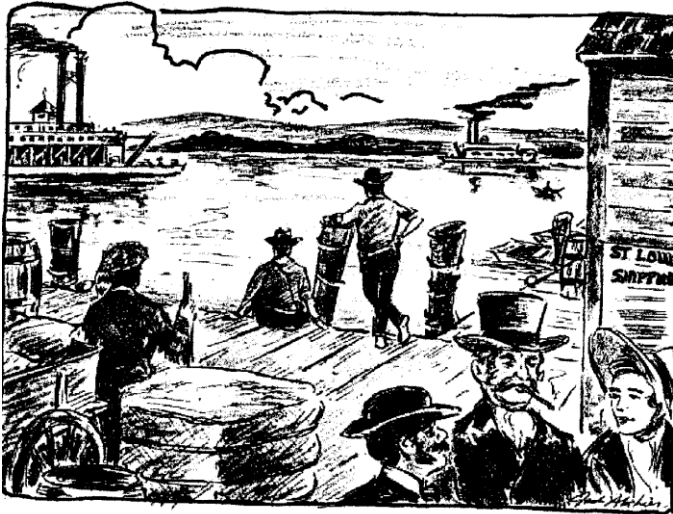
St. Louis in 1821

(From MO Freemason, Spring 1971, Pg 45 & 46)

What was St. Louis like in the year 1821 when the Grand Lodge was founded?

Fortunately there was a city directory published in that year which gives much interesting information. We quote several extracts from it:

It is but about 40 years since the now flourishing, but yet more promising, State of Missouri was but a vast wilderness; many of the inhabitants of this country yet remembering the time when they met together to kill the buffalo at the same place where Mr. Philjpson's ox saw and flour mill is now erected, and on Mill creek, near to where Mr. Chouteau's mill now stands. What a prodigious change has been operated! St. Louis is now ornamented with a great number of brick buildings, and both the scholar and courtier could move in a circle suiting their choice and taste. . . .



St. Louis Waterfront—1821

St. Louis likewise contains ten common schools; a brick Baptist church, 40 x 60 feet, built in 1819 (where the first Grand Lodge officers were installed), and an Episcopal church of wood. The Methodist congregation hold their meetings in the old Court House and the Presbyterians in the Circuit Court room There are three newspapers in the city, the St. Louis Enquirer, *Missouri Gazette* and *St. Louis Register*. . . .

Eight streets run parallel with the river, and are intersected by 23 others at right angles; three of the preceding are in the lower part of town and the five others are in the upper part. The streets in the lower part of the town are narrow, being from 32-38½ feet in width; those on "The Hill," or upper part are much wider. "The Hill" is much the most pleasant and salubrious and will no doubt become the most improved. The lower end of Market Street is well paved, and the trustees of the town have passed an ordinance for paving

the sidewalks of Main Street, being the second from and parallel to the river, and principal one for business.

On the Hill, in the centre of the town, is a public square, 240 x 300 feet, on which it is intended to build an elegant courthouse. The various courts are held at present in the buildings adjacent to the public square. A new stone jail of two stories, 70 feet front by 30 feet deep, stands west of the site of the court house. Market street is in the middle of the town, and is the line dividing the north part from the south. Those streets running north from Market have the addition of *North* to their names, and those running in opposite direction, South. . . .

There is a Masonic Hall, in which the Grand Lodge of the State of Missouri, the Ronal Arch, and the Master Mason's Lodges are held. Connected with this excellent institution is a burying ground, where poor Masons are interred at the expense of the fraternity. The council chamber of Governor William Clark, where he gives audience to the chiefs of the various tribes of Indians who visit St Louis, contains, probably, the most complete museum of Indian curiosities to be met with anywhere in the United States.

Population in 1810, 1,000; in 1818, 3,500; and at this time (1821) about 5,500 (Editor's Note---he was probably quite high). The population is much mixed and has no fixed character. This, the reader will perceive, arises from the situation of the country, in Itself new, flourishing and changing. . . .

St Louis has grown very rapidly. . . . It possesses such permanent advantages from its local and geographical situation that it must, ere some distant day, become a place of great importance, being more central with regard to the whole territory belonging to the United States than any other considerable town, and uniting the advantages of the three great rivers --- Mississippi, Missouri and Illinois, of the trade of which it is the emporium. . . .

It is estimated that the annual value of the Indian trade of the Mississippi and Missouri Rivers is \$600,000. The annual amount it imports to this town is stated at upwards of \$2,000,000. The commerce by water is carried on by a great number of steamboats, barges and keelboats. (Note: first steamboat had arrived four years earlier). These center here, after performing the greatest inland voyages known in the world. The principal articles of trade are fur, peltry and lead. The agricultural productions are Indian corn, wheat, rye, barley, oats, buckwheat, tobacco and other articles common to the Western country. . . . The roads leading from St Louis are very good, and it is expected that the great national turnpike will strike this place, as the commissioners for the United States have reported in favor of it. . . .

This was St Louis in 1821!

SOME “GRAND REPRESENTATIVE” JURISDICTIONS

C I L B U P E R N A C I N I M O D
 A O L A N I S W E D E N M A R K E
 N I L L I N O I S R A E L I A L L
 A H Q U E B E C D N A L G N E A A
 D O P H M D N A L T O C S D L H W
 A W I G A B O N O R W A Y I S O A
 V I R G I N I A L I S P R A A M R
 N S A K S A L A B A M A A N L A E
 O C P C I N E E C E E R G A V R E
 T O E H H A W A I I R A N T A K S
 G N L I A D A V E N R H U N D A S
 N S I N I I S A X E T A H O O N E
 I I H A T R E B L A U I T M R S N
 H N C O L O R A D O R T S S L A N
 S A D N A L E C I N K I D S O S E
 A I D N I F R A N C E A B U C C T
 W A I V A L S O G U Y N A M R E G

ALABAMA
 ALASKA
 ALBERTA
 ARKANSAS
 CANADA
 CHILE
 CHINA
 COLORADO
 COLUMBIA
 COSTA RICA
 CUBA
 DELAWARE
 DENMARK
 DOMINICAN REPUBLIC
 EL SALVADOR
 ENGLAND

FLORIDA
 FRANCE
 GABON
 GERMANY
 GREECE
 HAITI
 HAWAII
 HUNGARY
 ICELAND
 ILLINOIS
 INDIA
 IRAN
 INDIANA
 ISRAEL
 KANSAS

MONTANA
 NEVADA
 NORWAY
 OHIO
 OKLAHOMA
 QUEBEC
 SCOTLAND
 SINALOA
 SWEDEN
 TENNESSEE
 TEXAS
 TURKEY
 VIRGINIA
 WASHINGTON
 WISCONSIN
 YUGOSLAVIA

RULES FOR PLAY:

You must **circle the names of jurisdictions**, LETTER BY LETTER, in the puzzle above then line through or check the name off the list. **DO NOT black or blot out the letters** in the puzzle, as some of the same letters are used in another name. When you have found **ALL** of the above names that you can find in the puzzle, you should have 17 letters **NOT circled**. Writing down each of these letters from the top left to the bottom right, will sequentially spell out the name of jurisdiction hidden in the puzzle (and is NOT listed above).

The answer will be included in the next issue of this newsletter.

Last Quarters answer was: **RONALD WOOD!**

MISSOURI LODGE OF RESEARCH
RONALD D. MILLER, Secy
6033 MASONIC DRIVE SUITE B
COLUMBIA, MISSOURI 65202

NON PROFIT ORG
U.S. POSTAGE
PAID
COLUMBIA, MO
PERMIT #286

ADDRESS SERVICES REQUESTED



RP 07-01

MISSOURI
Lodge of research

OFFICERS

Worshipful Master – Elmer E. Revelle
Senior Warden - Jon B. Broyles
Junior Warden - Dale M. Bryan
Secy-Treas - Ronald D. Miller
6033 Masonic Dr Suite B
COLUMBIA MO 65202-6535
Senior Deacon - M. Robert Berger
Junior Deacon - Stanley M. Thompson
Chaplain - Stanton T. Brown
Marshal - Joseph L. Kile
Senior Steward - Larry R. Houge
Junior Steward - James E. Snavelly
Tiler - Nicholas Cichielo

What do **KMOX** (St. Louis 1120), **KOMU** (Chan 8 Columbia), **KMIZ** (Chan 17 Columbia), **CNN**, **KMBC** Chan 9 KC), **KQZ** (St. Joseph), **St. Louis Post Dispatch**, and the **Kansas City Star** all have in Common? During the month of January all these radio, TV stations and newspapers + **MANY more** provided news coverage of the **Missouri Children Identification Program (MOCHIP)** throughout the state. Our State Public Relations Coordinator, RWB Nick Cichielo, stated to the Board of the Foundation that the AIR and PRINT that we received, if purchased at existing rates, would be over \$2,000,000 in advertising. Special thanks goes to the Public Relations Committee of the Grand Lodge who helps the Foundation in spreading the word about the **MOCHIP** program.

RWB John Hess has been asked to serve on the Executive Committee of the National **Masonichip** committee of the Grand Masters Conference of North America. The goal of the National **Committee** is to promote Masonichip in all the jurisdictions of North America. To that end, the committee has scheduled a Worker-bee meeting in Omaha Nebraska on June 15th and 16th